

E. TROUBLESHOOTING:

If the robot stops or fails to turn, the wheels may be jammed with dust or hairs collected from the floor. Carefully brush away the dust and hair.

If it moves backwards, check if the motor wires are connected correctly. If not, swap them over.

F. HOW IT WORKS:

The secret of the Clever Cleaning Robot is the intelligent mechanism in the motor. The motor's worm gear turns the gear wheel at the top of the mechanism, which then turns a shaft attached to another smaller gear. This robot's gear can turn the axle and the two small wheels with rubber tires in more than one direction. Which makes the wheels move the robot forwards until it hits an obstacle, at which point the motor changes directions causing the shaft to switch and turn the wheels in a new direction.

G. FUN FACTS:


- The dust that your Clever Cleaning Robot sweeps up contains all sorts of dirt, including human hairs, animal hairs, pollen grainsfrom plants, fibres from clothes and paper, bits of soil and worst of all, old cells from your skin.
- Some top-of-the-range robot vacuum cleaners have an on-board computer and sensors that detect walls and furniture. The robot learns the shape of the room it's cleaning, and the position of tables and chairs, to make sure it cleans every part of the room.
- Robot window cleaners clean panes of glass by moving around on them and wiping them with a rubber blade. The cleaner is divided into two parts, with one half attached to each side of the glass. Strong magnets hold the two parts together to stop them slipping down the glass.

CLEVER  
CLEANING ROBOT

SCAN THE QR CODE TO VIEW MULTILINGUAL INSTRUCTIONS FOR THIS KIT.



FR. Veuillez scanner le code QR pour afficher les instructions multilingues pour ce kit. DE. Bitte scanne den QR-Code, um die mehrsprachige Anleitung für dieses Set anzusehen. NL. Scan de QR-code om de instructies voor deze set in verschillende talen te bekijken. IT. Scansiona il codice QR per visualizzare le istruzioni multi-lingua per questo kit. ES. Escanee el código QR para ver instrucciones en varios idiomas para este kit. JA. QRコードをスキャンして、本キットの多言語説明書をご覧ください。

**WARNING:**  
CHOKING HAZARD - Small parts.  
Not for Children under 3 years.

TO PARENTS: READ ALL INSTRUCTIONS  
BEFORE PROVIDING GUIDANCE TO YOUR  
CHILDREN.

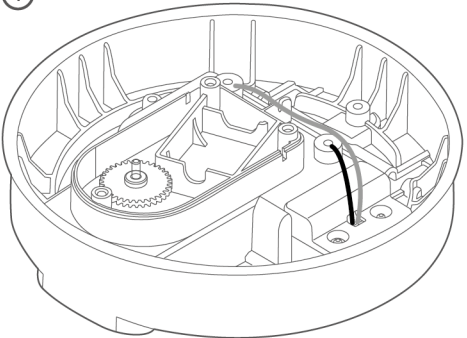
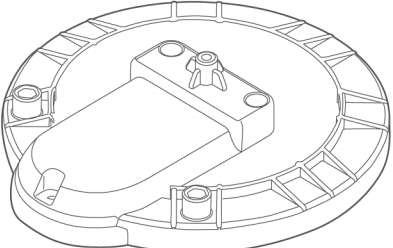
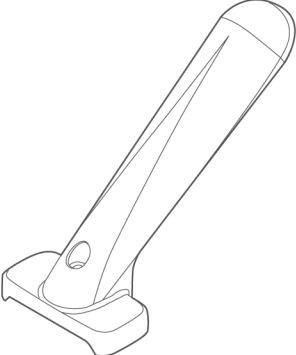

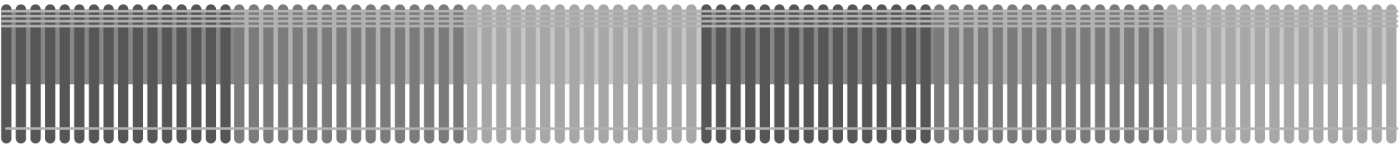
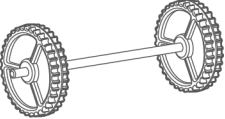
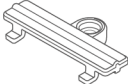


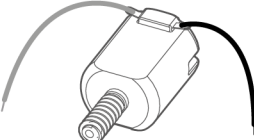

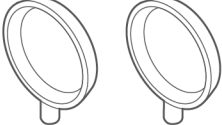


A. SAFETY MESSAGES:

1. Adult assistance and supervision are required at all times.
2. This kit is intended for children over the age of 8.
3. This kit and its finished product contain small parts which may cause choking if misused. Keep away from children under 3 years old.
4. To prevent possible short circuits, keep the metal wire ends inside the battery case away from any metal objects.
5. Only install batteries after you have assembled the product. Adult supervision is required.

B. USE OF BATTERIES:

1. The product requires two 1.5V AA batteries (not included).
2. For best results, always use fresh batteries.
3. Make sure you insert the batteries with the correct polarities.
4. Remove the batteries from the kit when not in use.
5. Replace exhausted batteries straight away to avoid possible damage to the kit.
6. Rechargeable batteries must be removed from the kit before recharging.
7. Rechargeable batteries should be recharged under adult supervision.
8. Make sure that the supply terminals in the battery case are not short circuited.
9. Do not attempt to recharge non-rechargeable batteries.
10. Do not mix old and new batteries.
11. Do not mix alkaline, standard (carbon-zinc), or rechargeable batteries

C. CONTENTS:

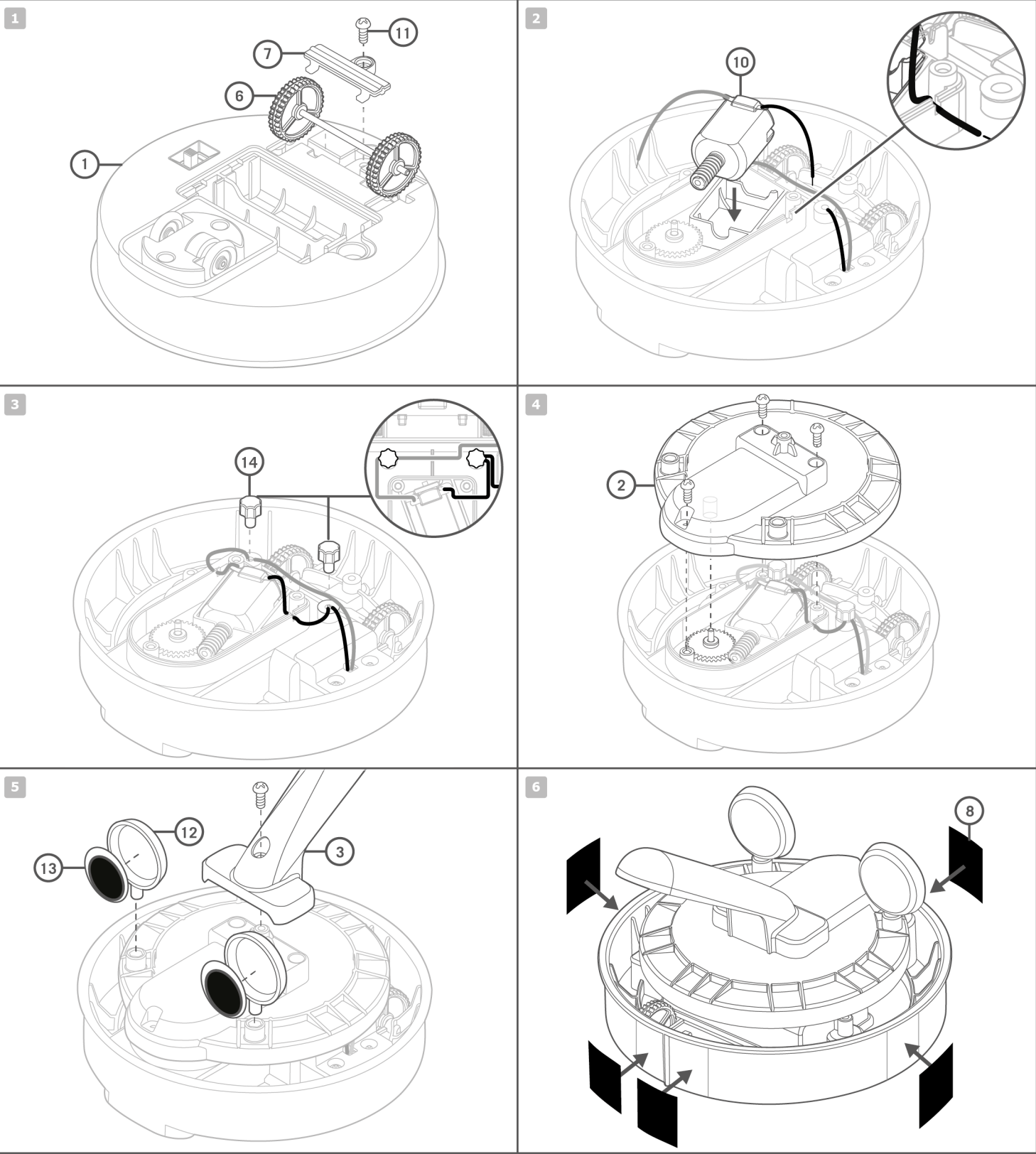
① 	② 	③ 
④ 		
⑤ 		
⑥ 	⑦ 	⑧ 
⑨ 	⑩ 	⑪ 
⑫ 	⑬ 	⑭ 

Part: 1: Robot body, 2: Body Cover, 3: Handle, 4: Ribbon x2, 5: Fabric duster, 6: Axle with wheels, 7: Axle cover, 8: Fastening Pad x 5, 9: Battery case cover, 10: Motor with wires, 11: Screws x 6, 12: Eye Support x 2, 13: Eye Sticker x2, 14: Terminal Cap x 2.Also required, but not included in the kit: 1 x small crosshead screwdriver, 2 x 1.5 V AA batteries.

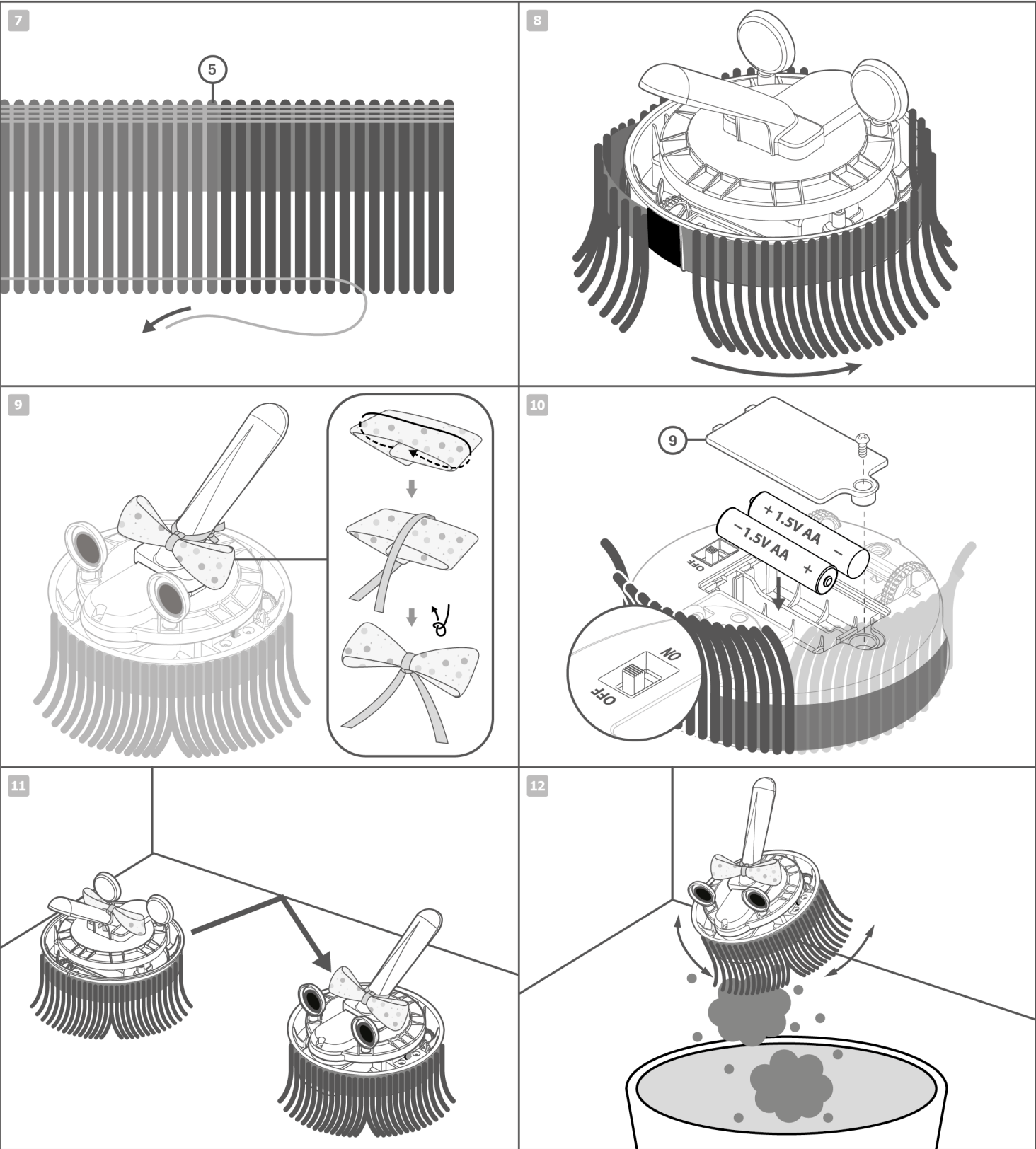
QUESTION AND COMMENTS:

We treasure you as a customer and your satisfaction with this product is important to us. If you have any comments or questions, or you find any parts in this kit missing or defective, please do not hesitate to contact our distributor in your country, whose address is printed on the packaging. You are also welcome to contact our support team via email: infodesk@4M-IND.com, fax: (852) 25911566, telephone: (852) 28936241, or our website: WWW.4M-IND.COM.

D. ASSEMBLY:



1. Insert the axle (6) and it's two wheels into the slot on the bottom of the cleaner body (1). Screw in the axle cover (7) to secure it in place.
2. Turn the body over and insert the motor (10) into its slot. Make sure that the worm gear on the motor interlocks with the gear wheel on the base.
3. Place the bare metal ends of the black wires from the motor and the battery case into one terminal. Push a terminal cap (14) into the terminal to secure the wires in place. Repeat with the two red wires in the other terminal.
4. Put the body cover over the motor and secure it with three screws.
5. Remove the backing from the two eye stickers (13) and stick one into each eye support (12). Push the eye supports into their holes in the base. Snap the handle (3) into place and secure it with a screw (11).
6. Remove the layer of film from the back of the fastening pads (8) and stick them inside the lines engraved on the body as shown in the diagram. To secure the fabric duster, two of the pads must be stuck next to each other.



7. Carefully remove the singular string from the bottom of the fabric duster (5) so the fabric strands can move freely.
8. Press one end of the duster's band against one of the two fastening pads that are next to each other. Stretch the fabric duster around the body, pressing it onto the other fastening pads.  
Important: Make sure the strands of the fabric duster face away from the body to ensure that the wheels can move smoothly.
9. Fold up the ribbon and tie it up with the thinner ribbon before you attach it to the robot. Excellent work! Your Clever Cleaning Robot is ready to roll.
10. Insert two AA batteries into the battery compartment in the robot's base, making sure the poles are the correct way round (the flat end of the battery always goes against the spring). If the motor begins to run, flick the robot's switch on the base to turn the motor off. Secure the battery compartment cover with a screw. Flick the base's switch to turn the motor on and place the Clever Cleaning Robot on the floor.
11. Find a smooth floor for your Clever Cleaning Robot to explore. Watch it move across the floor, collecting dust as it goes. When it hits an obstacle it will turn or reverse to carry on with its job.
12. After a few minutes, pick up and switch off the Clever Cleaning Robot and tap any dust or hairs into a bin.